

Research Nurse (Qualified) **- Hepatology Research Nurse**

Job Title	: Research Nurse
Base / Department	: Hepatology Research
Grade	: Band 6 (IJES: tbc)
Hours of work	: Full time (part time considered, min 30hrs)
Division & Directorate	: SUWON
Responsible to	: Arran Babbs
Accountable to	: Clinical Service Lead & Lead for NMAHP Clinical Research Delivery
Details of special conditions	:

Job Summary:

The Gastroenterology and Hepatology Clinical Trials facility accommodates a large number of trials both commercial and academic, with a large team of research nurses and administrators. We have an extensive portfolio of studies across both teams and share the facilities to deliver on these.

We are located on level 6 of the John Radcliffe Hospital and are co-located and work alongside the Gastroenterology Day Case Unit on 6B.

The Hepatology Team works on studies covering areas of Auto immune liver disease (PSC/PBC/AIH) and MASLD/MASH, Advanced Liver Disease (ALD) and alcohol dependency with multiple studies in all these areas of liver disease.

We are currently recruiting to Essence (MASH), VISTAS (PSC), OPERA (PBC) and Indigo (IgG4), with several studies in set-up which will recruit patients with PBC, PSC, MASLD and cirrhosis.

Could you be a passionate advocate for patients with these diseases? Does helping find curative and management methods whether drug development or supporting lifestyle changes appeal to you? Are you a skilled communicator who can work closely with senior doctors and also be the patient's first port of call?

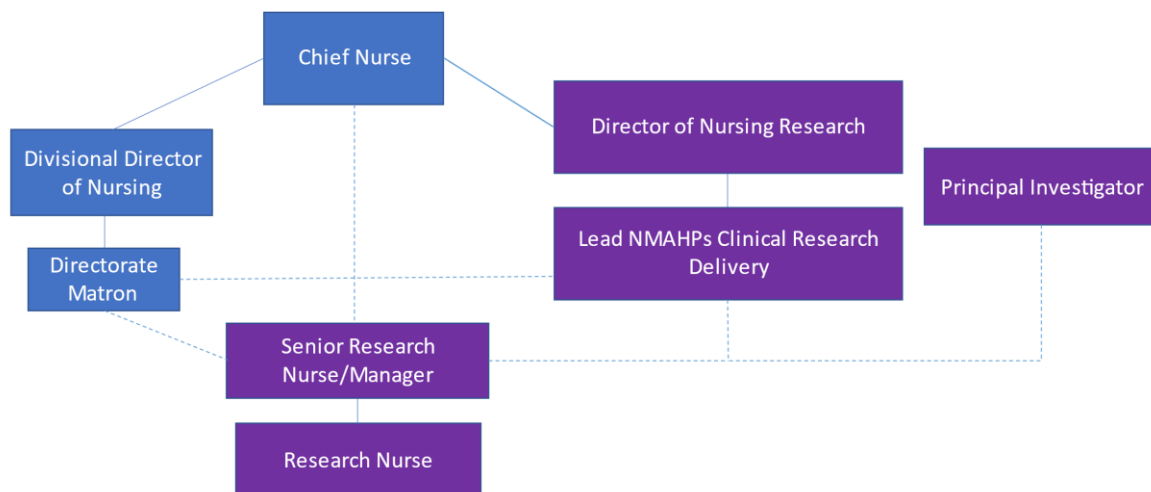
With a growing portfolio of studies we are increasing our team and advertising for a Band 6 nurse to join us. We would also consider a Band 5 in a developmental role.

As a facility we look to support our staff in their continued professional development and we would be very keen to support the successful candidate with further educational opportunities while in post. A secondment opportunity would also be considered.

If research is something you have not previously considered we would encourage you arrange an informal visit to come and meet the team and get an insight into our area of work.

- Employed as a Research Nurse with day-to-day responsibility for allocated portfolio of studies and study participants including, as required:
 - Planning
 - Scheduling
 - Conduct including intervention
 - Recruitment & retention of participants
 - Data management
- Fulfil the expectations and capabilities as delegated by the Sponsor, Chief Investigator or Principal Investigator as set out in GCP & Research Governance Framework
- Work collaboratively with OUH and external research & service delivery colleagues to ensure high quality participant care

Organisational Chart



Main Tasks and Responsibilities

Clinical Research

The post holder will practice with knowledge, skills and behaviours which...

- Manage workload and co-ordinate allocated clinical trials and research studies
- Practice in compliance with their code of professional conduct, being responsible and accountable for their decisions, actions, or omissions.

- Utilise effective communication skills through a variety of methods, supporting participants in decision making in relation to clinical trial and study entry and participation.
- Utilise effective communication skills with colleagues both internally and/or externally, in verbal, non-verbal and written communication methods, adapting to changing parameters as required, which includes thorough accurate documentation in patient records as required
- Provide and receive highly sensitive, complex or contentious information relating to participant involvement and care, and communicates information to participants, families or carers with respect, compassion and empathy
- Able to competently perform a range of clinical procedures as required as part of the research protocol, ensuring accurate data capture. These include but are not limited to taking blood and carrying out minor laboratory procedures as required by relevant study protocol (eg: sample preparation and centrifugation) following appropriate training. Administration of intravenous therapies to trial patients within the unit, in accordance with OUH and clinical trial protocols.
- Participate in and ensure compliance with Informed Consent Procedures, acting within boundaries of own competency, research regulation and Trust policies/SOPs.
- Use own professional judgment identifying when to escalate and seek senior support/guidance
- Support the research team with all administrative tasks, including study set up including completion of feasibility requests, as required
- Ensure all necessary regulatory approvals are in place prior to approaching potential study participants
- Work within the limits of the approved protocol and any approved amendments

Leadership and Management

The research nurse post holder will practice with knowledge, skills and behaviours which...

- Initiates and develops effective relationships, fostering clarity of the research nurse role within teams, to encourage productive and efficient working practices.
- Act as a role model for excellence in clinical research delivery & demonstrate the values of the OUHFT, including a person-centred approach to care.
- Provide line management and mentorship where appropriate to junior colleagues.
- Support learners on placement within the team.
- Contribute to the research team and service development as required.
- Promote research to potential participants and colleagues within the Trust and other partners.
- Support the development and implementation of local standard operating policies and procedures.

- Remain adaptable to change, continually developing own practice.
- Participate in clinical & research governance reporting and participate, as required, in the investigation of clinical & research incidents.
- Act as a sub-Investigator or Principal Investigator on non-interventional studies, as appropriate, inline with personal development programme.
-
- Recognise the critical importance of wellbeing in self and others, seeking to identify and manage stressors or pressures to promote health and wellbeing.

Education

The research nurse post holder will practice with knowledge, skills and behaviours which...

- Assess and address own CPD learning needs as research delivery nurse, working to a personal development plan that reflects the needs of the individual and clinical research delivery service
- Critically reflects to maximise clinical & research delivery skills and knowledge development.
- Engage with performance reviews and appraisal processes, as required.
- Engage with training and education opportunities across both research delivery, leadership and clinical speciality. This may include conferences, study days, and investigators meetings.

Improving Quality and Developing Practice

The Research Nurse post holder will practice with knowledge, skills and behaviours which...

- Report all Adverse Events and Serious Adverse Events in line with ICH-GCP, ISO 14155 and OUH NHS Trust Adverse Events Reporting policy.
- Promote the value of clinical research to potential participants, the public and NHS colleagues.
- Participate in dissemination of research results locally and nationally as appropriate.
- Represent participants and clinical research delivery staff in the development and review of research protocols, ensuring the protocols are deliverable, as appropriate.
- Promote and take part in PPI engagement in research design and dissemination.
- Seek to publish new findings and best practice in Trust communications, meetings, conferences and journal articles where appropriate.
- Understand the professional and current issues related to clinical research and area of practice.
- Participate in audits and inspections to inform own and other's practice, helping to formulate and implement strategies to act on key learnings and making improvements.
- Actively seeks feedback from individuals, families, carers and colleagues to inform own development and/or service developments in practice.

Job Description Adaptations

This job description is neither definitive nor exhaustive and is not intended to be fully comprehensive. It may be reviewed in the light of changing circumstances following consultation with the ACP post holder. This job description is to be read in conjunction with all current Oxford University Hospitals NHS Foundation Trust policies, procedures & guidelines

PERSON SPECIFICATION

Job Title: Research Nurse

	Essential	Desirable
Education, training , qualifications & experience	<p>Registered Nurse (Part 1. 8. 12 or 15 of the Nursing and Midwifery Council Register depending on area of practice)</p> <p>UK recognised first level degree (HEI Level 6), in Nursing or specialist nursing field</p> <p>Evidence of ongoing CPD, including multi-source feedback within own professional portfolio</p>	<p>Specialist post-graduate education / qualifications, or training relevant to area of clinical practice and/or clinical research delivery</p> <p>Significant experience and expertise within speciality of the recruiting area for the research nurse role</p> <p>Good Clinical Practice training</p> <p>Human Tissue Act training</p> <p>Informed consent training</p> <p>Knowledge of NHS research governance and policy</p> <p>Associate Principal Investigator/Principal Investigator training</p>
Clinical Practice	<p>Competency in clinical skills relevant to clinical research area – may include but not limited to vital sign recording, drug administration, phlebotomy/ cannulation/ECG/ cognitive assessment</p> <p>Competent to work under own initiative within boundaries of the role</p> <p>Competency in high level of accuracy and when assessing participants and documenting research and care activities</p>	<p>Ability to work with a high level of attention to detail</p> <p>Experience of sample processing in a laboratory setting</p>

	<p>Able to proactively contribute to the education of learners, MDT colleagues and less experienced staff</p> <p>Commitment to evidencing own professional development, capabilities, and competency development</p> <p>Willingness to engage in clinical supervision to develop knowledge, skills and behaviours</p> <p>Evidence of effective team working and team leadership (when required) as part of research delivery team</p>	
Values and behaviours	<p>Align to the Trust values, conducts themselves in a professional manner at all times</p> <p>Positive attitude to all tasks and stakeholders,</p> <p>Willingness and enthusiasm towards working as part of a multi-disciplinary team in delivering research and care, as required</p> <p>Shows pride in the quality of care they provide for clinical research participants, learning from setbacks and successes</p>	
Leadership and Management	<p>Organised and able to prioritise own workload</p> <p>Ability to maintain and contribute to development of standard operating procedures and research processes</p> <p>Role model promoting clinical research delivery nursing</p> <p>Establish and maintain positive working relationships with service support departments, clinical research associates, sponsor representative, R&D staff as appropriate</p> <p>Able to supervise non-registered and less experienced staff to ensure effective research and care delivery.</p>	

Personal Qualities & skills	<p>Motivated and able to articulate reasons for desire to work in specific practice area</p> <p>Ability to recognise own limitations, working within scope of practice, acting on feedback linked to practice change when required</p> <p>Excellent communication skills, all channels</p> <p>Flexibility in working hours as needed for the post</p> <p>Clean driving license/access to car if needed for post</p> <p>Computer literate with experience of working with Microsoft Office packages</p> <p>Advanced keyboard skills, to ensure fluent documentation</p>	<p>Ability to appraise documents, using analytical and problem-solving skills</p>
--	--	---