



For further information please contact  
**0161 918 7450** or email  
**CarParking&Travel@christie.nhs.uk**

Transport for Greater Manchester

## Travel information

For journey planning on bus, train and tram,  
news on delays and disruptions,  
and information about tickets and passes:

Phone: **0161 244 1000**

Monday to Friday: 7am to 8pm

Weekends and bank holidays: 8am to 8pm

<https://my.tfgm.com/#/>

## Public Transport Interest-Free Loan

An interest-free loan is available to you  
if you wish to purchase an annual  
season ticket for bus, rail, Metrolink  
(or combinations). The Trust will pay  
the bill for you and deduct the money  
over 10 equal instalments.

For further information contact  
The Christie on the details above.

## Travel Planning

Help with planning your journey in the North West is  
available online through Transport for Greater Manchester.

<https://my.tfgm.com/#/>

## Walking

For information on walking or to plan a walking route, see:

[www.walkit.com](http://www.walkit.com)

### Walking Wednesday

The Christie benefits from a Ramblers Accredited walking group that all  
staff members are free to join. There are a range of walks from gentle  
strolls through to really brisk walks. The walks are 30 minutes long and  
the meeting point is Palatine Road entrance at 12:00 every Wednesday.

For further information on route planning or walking please contact

**0161 918 7450** or email **CarParking&Travel@christie.nhs.uk**

## Cycling

If you do not have a bike and would  
like to buy one, then Cyclescheme  
provides a perfect option for a single  
purchase. For further details please  
use the link:

[www.cyclescheme.co.uk/1f26e1](http://www.cyclescheme.co.uk/1f26e1)

- ◆ Walk around of the facilities  
every Wednesday at 10:00.  
Meeting point Palatine Road  
entrance.
- ◆ Pool bikes - 10 pools bike are available to hire free of charge for  
business travel or to try out cycling.
- ◆ Bicycle parking - Nearly 200 secure cycle spaces and circa 120  
Sheffield Cycle Stands.
- ◆ Free maintenance servicing - the second Wednesday of each month  
with the only cost for staff being any parts if they need replacing.
- ◆ Showers and lockers are available at:  
Cycle hub 1 (Wilmslow Road)  
Cycle hub 2 (Palatine Road): Room 26-0-32 / Room 26-1-12

Please contact **CarParking&Travel@christie.nhs.uk** or **0161 918 7450**  
for information on cycling or access to lockers and changing rooms.



## Transport for Greater Manchester – Online cycle centre

Find everything you need to know about cycling in your area of Greater  
Manchester, from free training, maps and route planning to local events  
and news: [www.tfgm.com/cycling](http://www.tfgm.com/cycling)



## Catch the Bus

The Trust provides financial concessions for weekly and monthly bus passes.  
Ticket prices are subject to change by the service providers. The concessions  
are available for Stagecoach Manchester and First Manchester.

- ◆ Discounted weekly and monthly bus tickets can be purchased from  
the cashier's office in the main hospital. Opening times for staff are  
Monday to Friday 2pm until 4pm.
- ◆ Annual tickets are available for purchase by contacting  
**0161 918 7450** or emailing **CarParking&Travel@christie.nhs.uk**

## Metrolink

Metrolink is a light rail network operating throughout Greater Manchester.  
The fast frequent service is fully accessible to all, running seven days a week,  
364 days of the year.

The nearest stations to the Trust are **Burton Road** and **West Didsbury**  
which are both about 10 minutes walk away.

If you are a permanent employee or have a 12 month contract with  
The Christie, you are eligible to apply for a 10% discount off the price of  
an annual season ticket.

To apply for a discounted annual Metrolink ticket please contact  
**0161 918 7450** or email **CarParking&Travel@christie.nhs.uk**

## Catch the Train

- ◆ Mainline trains arrive at Manchester Piccadilly or Oxford Road Station.  
You can then take a bus or cycle to The Christie.
- ◆ If you arrive at Manchester Victoria you can also take a bus or cycle.

### Local stations

- ◆ Mauldeth Road connects indirectly via bus 278 hourly or directly  
by bicycle.
- ◆ Burnage connects indirectly via bus 179 to Withington Village  
hourly or directly by bicycle.
- ◆ East Didsbury connects directly via buses 42, 42A, 42B and 142  
or directly by bicycle.

### Ticket Information

Annual season tickets will allow significant savings over the course of  
a year, as well as the added convenience of not having to purchase a  
ticket each day at the station. For rail season ticket prices see National  
Rail season ticket calculator at [www.nationalrail.co.uk](http://www.nationalrail.co.uk) or telephone  
National Rail enquiries on **08457 484 950**

System One County Card allows unlimited travel on any bus and train  
across Greater Manchester and also on city zone trams. Follow link for  
details on the passes available: [www.systemonetravelcards.co.uk](http://www.systemonetravelcards.co.uk)

### Cycling by train

National Rail encourages the integrated use of cycles and trains - two  
convenient and environmentally friendly forms of transport. Some train  
companies have restrictions on when accompanied cycles may be carried,  
especially at busy times. Select the train company you are travelling with  
and look at the 'Onboard facilities' section. Where accompanied cycles  
are carried there is no charge.

### PlusBike

PlusBike provides free and easy-to-access information to help you plan  
your journey and make it easier, visit:

[www.plusbike.nationalrail.co.uk](http://www.plusbike.nationalrail.co.uk)

## Buses/Metrolink Frequencies

### Metrolink 5 Rochdale – City Centre – East Didsbury

Rochdale ➡ - Oldham - Westwood - Newton Heath - Victoria ➡ -  
St Peter's Square - Deansgate ➡ - Trafford Bar - Chorlton -  
Burton Road or West Didsbury (for The Christie) - East Didsbury ➡

**Daily** - Every 12 minutes

Please note: Main Metrolink 5 stops shown.

### Park & Ride

The Trust operates a free park and ride service with shuttle service.  
For further information please contact **0161 918 7450** or email  
**CarParking&Travel@christie.nhs.uk**

### 41 Sale – City Centre

Altrincham ➡ - Sale ➡ - West Didsbury - The Christie - Rusholme -  
Manchester Royal Infirmary - Manchester, Piccadilly Gardens

**Daily** - Monday to Friday daytime every 12-15 minutes.  
Saturday daytime 15 minutes and Sunday daytime 20 minutes.  
Evenings 30-60 minutes.

◆ Some evening journeys operate to/from Altrincham

Operated by First Manchester

**Combined services of all operators for 42/42A/42B/142  
offer a frequent daytime and evening service from  
City Centre or East Didsbury to The Christie.**

### 42 City Centre - East Didsbury

Piccadilly Gardens - Manchester Royal Infirmary - Rusholme -  
The Christie - Didsbury - East Didsbury

**Daily** - Monday to Saturday daytime and evening every  
20 minutes.

Operated by First

### 42 Stockport - City Centre

Stockport - Heaton Mersey - East Didsbury ➡ - The Christie -  
Rusholme - Manchester Royal Infirmary -  
Manchester, Piccadilly Gardens

**Daily** - Monday to Saturday daytime every 30 minutes.  
Sunday daytime 60 minutes. Evenings every 30 minutes.

Operated by Stagecoach

### 42A Reddish - City Centre

Reddish - Heaton Moor - East Didsbury ➡ - The Christie - Rusholme -  
Manchester Royal Infirmary - Manchester, Piccadilly Gardens

**Monday to Saturday** - Daytime every 30 minutes.

Operated by Stagecoach

### 42B Woodford - City Centre

Woodford - Bramhall - Cheadle Hulme - Cheadle - East Didsbury ➡ -  
The Christie - Rusholme - Manchester Royal Infirmary -  
Manchester, Piccadilly Gardens

**Daily** - Monday to Saturday daytime every 30 minutes, Sunday  
daytime 60 minutes.

Operated by Stagecoach

### 43/43N Manchester Airport - City Centre

Manchester Airport ➡ - Wythenshawe ➡ - Sharston - The Christie -  
Rusholme - Manchester Royal Infirmary - Manchester, Piccadilly Gardens

**24 Hour** - Monday-Saturday daytime every 10 minutes.

Sunday daytime 20 minutes.

Evening and night service (N43) 30 minutes.

Operated by Stagecoach Manchester

### 142/142N City Centre - East Didsbury

Piccadilly Gardens - Manchester Royal Infirmary - Rusholme -  
The Christie - Didsbury - East Didsbury

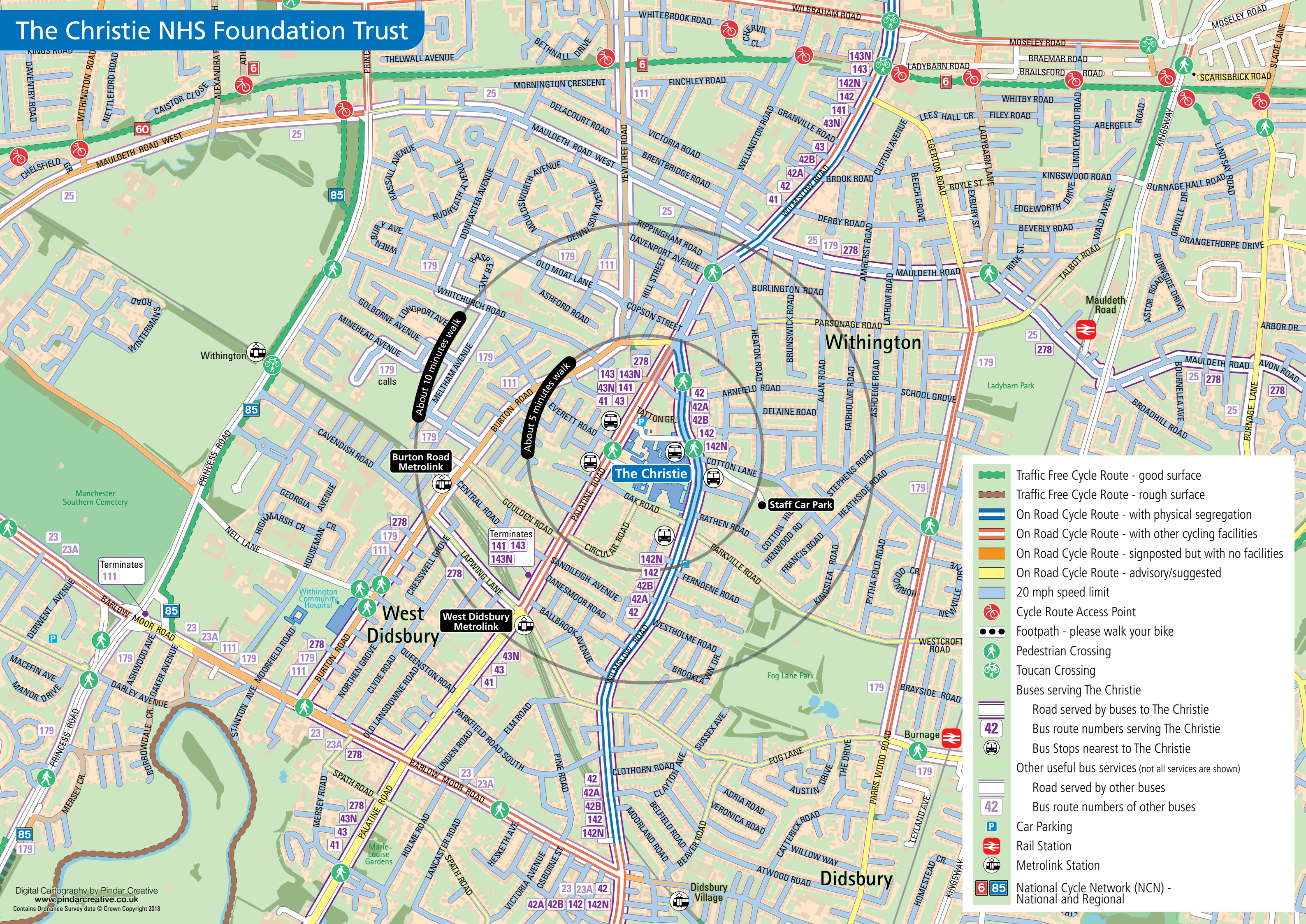
**Daily** - Daytime and evening every 10 minutes.

Midnight to 3am every 30 minutes (142N).

Operated by Stagecoach



# The Christie NHS Foundation Trust



- Traffic Free Cycle Route - good surface
- Traffic Free Cycle Route - rough surface
- On Road Cycle Route - with physical segregation
- On Road Cycle Route - with other cycling facilities
- On Road Cycle Route - signposted but with no facilities
- On Road Cycle Route - advisory/suggested
- 20 mph speed limit
- Cycle Route Access Point
- Footpath - please walk your bike
- Pedestrian Crossing
- Toucan Crossing
- Buses serving The Christie
  - Road served by buses to The Christie
  - Bus route numbers serving The Christie
  - Bus Stops nearest to The Christie
- Other useful bus services (not all services are shown)
  - Road served by other buses
  - Bus route numbers of other buses
- Car Parking
- Rail Station
- Metrolink Station
- National Cycle Network (NCN) - National and Regional