

CWP Trust Profile

Overview

Cheshire and Wirral Partnership NHS Foundation Trust (CWP) provides mental health, learning disability, and community physical health services to the people of Cheshire and Wirral. These services are provided in partnership with commissioners, local authorities, voluntary and independent organisations, people who use our services and their carers.

CWP has around 15,000 foundation trust members and employs more than 3,400 staff across 65 sites, serving a population of over a million.

Widely seen as a regional leader, CWP takes an active approach in tackling stigma and bridging health and access inequalities. The Trust is committed to providing the highest quality of care for people who use our services to improve their health and well-being.

Our Services

Liverpool

Community adult ADHD assessment and treatment and Cheshire & Merseyside Adolescent Eating Disorder Services (CHEDS)

Bolton

Eating disorder services

Warrington

Eating Disorder services

Trafford

Learning Disabilities and Eating Disorder services

Halton

Eating Disorder Service

Cheshire East

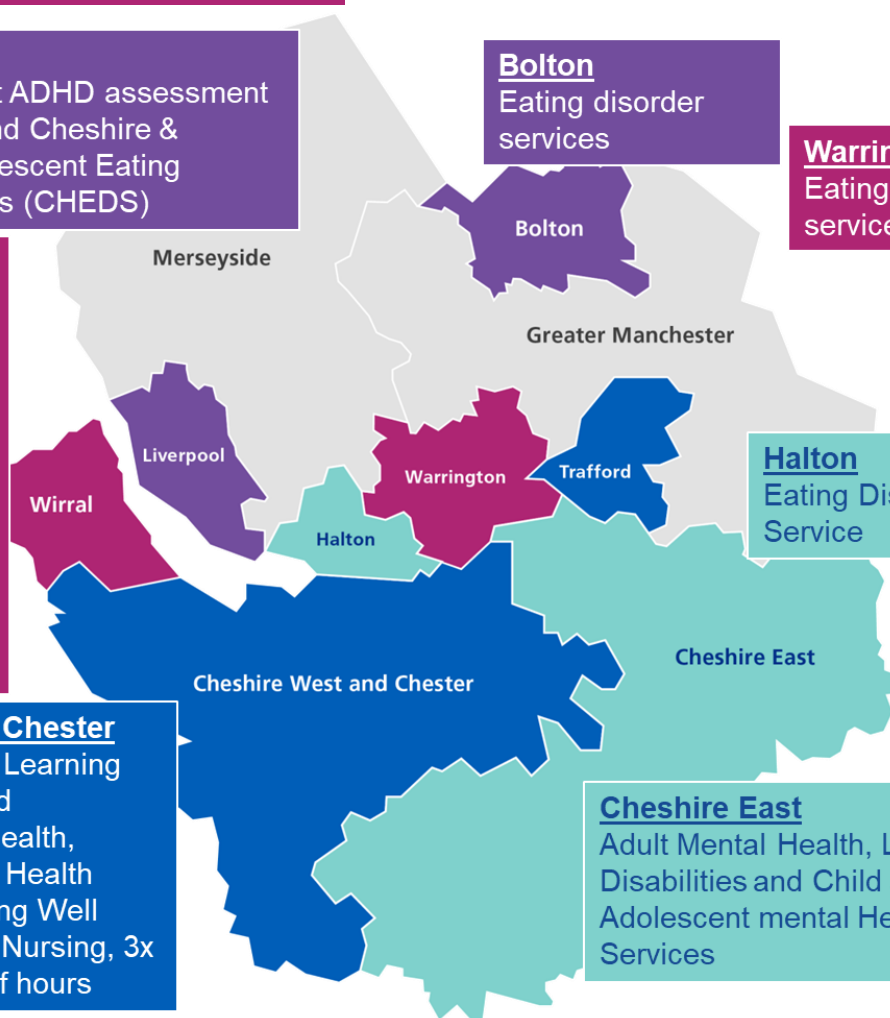
Adult Mental Health, Learning Disabilities and Child and Adolescent mental Health Services

Wirral

Adult Mental Health, Learning Disabilities, Child and Adolescent Mental Health Services, All Age Disability, Continuing Healthcare and Complex Healthcare Service

Cheshire West and Chester

Adult Mental Health, Learning Disabilities, Child and Adolescent Mental Health, Community Physical Health Services, 0-19 Starting Well Service, Community Nursing, 3x GP's and a GP out of hours



Our vision and values

‘Leading in partnership to improve health and well-being by providing high quality care’

CWP adopted the 6Cs as our Trust values
in June 2013.

We aim to recruit people who can clearly
demonstrate they share our values and will
embrace them in their working life.



We have also introduced our **Person Centred Framework** – a new set of principles that ensure person centred thinking is used to connect with people as unique individuals with their own strengths, abilities, needs and goals.

1. We are all unique, with our own strengths, needs and goals. We know that everyone has different abilities and that we all have something to offer. We will respect and nurture different experiences and viewpoints.
2. We will all support and encourage each other to live full lives.
3. Mental health and physical health are as important as each other. We will work together to make informed decisions that can help make life the best it can be, even in times of difficulty.
4. We will celebrate our achievements and learn from everything we do.
5. We will be honest, realistic and clear with one another about our roles, using language that we all understand.
6. We will be adaptable in our approach so that we can best understand what matters to each person we meet.
7. We will try to understand each person's situation, encouraging and supporting informed decision-making.

Our objectives

Our seven strategic objectives are to:

1. Deliver high quality, integrated and innovative services that improve outcomes
2. Ensure meaningful involvement of service users, carers, staff and the wider community
3. Be a model employer and have a caring, competent and motivated workforce
4. Maintain and develop robust partnerships with existing and potential new stakeholders
5. Improve quality of information to improve service delivery, evaluation and planning
6. Sustain financial viability and deliver value for money
7. Be recognised as an open, progressive organisation that is about care, well-being and partnership

Our achievements

- Our Trust has been rated **‘Good’ overall and ‘Outstanding’ for care** — [Care Quality Commission \(CQC\)](#)
- We achieved the Bronze Award with the Defence Employment Recognition Scheme (DERS) and recognised as Veteran Aware.
- Maintained **Care Quality Commission (CQC) "outstanding" rating for caring**, alongside an overall rating of Good.
- [Shortlisted](#) in the 2022 HSJ Patient Safety Awards.
- **Achieved the Cheshire and Merseyside Social Value Award**, which supports and recognises organisations that "help local people and communities live valued and fulfilled lives and improve the place that we live. It recognises local organisations rooted in their communities as Anchor Institutions whose approach focuses on reducing avoidable inequalities and improving health and wellbeing".
- **Achieved an Autism Accreditation Specialist Award** from the National Autistic Society for services at Ancora House, CWP's child and adolescent mental health inpatient unit based in Chester. CWP are the second provider of children and young people services, nationally, to receive this award which demonstrates our commitment to providing the highest standard of support for autistic people.
- CWP is listed as being in the **top 10 best performers in England (2021) for providing "equal opportunities for career progression or promotion"** and "its percentage of board members by ethnicity compared to BME workforce within NHS Trusts by region". Our most recent WRES report identified a 21.4% Board percentage figure against 5.5% for the overall Trust, 7.08% for the local population and a 12.6% NHS national average.
- **Shortlisted in the Nursing Times award** in the category of 'Workforce Team of the Year 2021 for the Chester West Hospital at Home service (run by partners in the Cheshire West Integrated Care Partnership).
- Successfully launched our [NHS Rainbow Badge Scheme](#) in 2020/21.
- **Finalist in the HSJ Value Awards 2020**, Mental Health Service Redesign Initiative category.
- **Shortlisted in the 2019 HSJ Patient Safety Awards** for an innovative new Safety Management System which measures and monitors patient safety.
- **Finalist in the HSJ Mental Health Provider of the Year** category at the 2019 Health Service Journal Awards.
- **Highly commended for the [Big Book of Best Practice](#)** at the 2019 Health Service Journal Value Awards.
- **Willaston GP Surgery was rated as the number one** GP practice in Cheshire in the 2019 Patient Survey and in the top 100 GP practices in England.