

## Healthcare Support Worker Key Duties



### Administrative



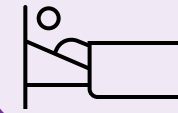
- Record actions/findings on the appropriate documentation
- Assist restocking supplies and maintenance of equipment
- Carry out assigned clerical tasks as directed by a registered nurse/midwife

### Patient Care



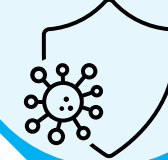
- Escalating any concerns you may have regarding a patient to the registered nurse
- Promote and encourage independence
- Undertake simple physiological observations and dressings
- Supporting with elimination needs, assisting using toilet facilities such as bed pans, commodes and vomit bowls
- Assist with feeding and hydrating patients
- Support and respect patients making choices about their care
- Assisting with hygiene needs including care of skin, mouth, hair and eyes
- Provide basic life support
- Assist in caring for patients who are end of life and who have died, supporting relatives and friends

### Therapy



- Ensure the correct moving and handling techniques and the use of pressure relieving aids
- Support the multidisciplinary team in the prevention and management of damage to patients' skin

### Infection Control



- Follow trust guidelines and policies to prevent the spread of infection such as Covid19, Flu, C-Diff etc
- Dispose of bodily fluids, soiled linen, spillages etc in accordance with the Trust policy and guidelines
- Care of urinary catheters, stomas and other aids that enable the patient to perform eliminations