

GOSH International & Private Care

Ward & Speciality
Nursing information



Great Ormond Street
Hospital for Children
INTERNATIONAL AND PRIVATE CARE

www.gosh.ae

Nursing at GOSH International & Private Care



The International & Private Care Directorate is the private patient unit within Great Ormond Street Hospital (GOSH).

Our team of extraordinary nurses provide lifesaving care for seriously ill children from around the world who would otherwise be unable to receive it.

We treat over 5,000 children from over 80 countries, every year. As a tertiary and quaternary hospital, most of our patients have rare and complex conditions. For a lot of our families, we represent their last hope.

Our cancer and mixed-specialty wards, alongside our international patient mix, provides you with unique clinical knowledge and an experience unrivalled across the UK.

GOSH have over 60 paediatric specialties and sub-specialties and as a nurse here you get the opportunity to see patients from across this unique breadth of services.

With the largest paediatric nurse education program in Europe, we can offer you extensive education opportunities and the chance to build an extraordinary career. We also offer unique cultural training opportunities and the chance to work within a truly international team.

We are proud to be part of the NHS and all our staff are on NHS contracts. Our service provides an additional income stream that supports the treatment of our NHS families and our nurses are proudly '**One Team**'. Our nursing team share the same benefits, resources and facilities as the rest of GOSH.



Bumblebee Ward

Mixed Speciality

Bumblebee ward has 18 single patient and parent rooms and a 3 bedded area. The ward cares for children and young people, aged up to 16 years, from over 20 differing specialties.

As a nurse on Bumblebee Ward you will look after children from medicine and surgical specialties including, but not limited to, neuroscience, gastroenterology, orthopaedics, plastics and craniofacial.



Bumblebee Ward is managed by our highly qualified nursing team, as well as consultants, doctors, clinical nurse specialists, physiotherapists, healthcare assistants, speech therapists, dietitians, play specialists, psychologists and hospitality assistants. Bumblebee Ward has three dedicated Arabic Interpreters situated on the ward.

Open 24 hours a day
7 days a week
Level 5 Octav Botnar Wing





Hedgehog Ward

Mixed Speciality

Hedgehog Ward has 10 single en-suite patient rooms with a bed for a parent or carer.

The ward cares for patients from mixed specialities; predominantly lower dependency patients from surgical pathways with children also coming for clinical review and assessment. The case and patient mix seen on Hedgehog Ward is varied, offering you experience in a breadth of specialities and cultures.

Opportunities for skill development and acquisition are varied on Hedgehog Ward and staff are encouraged and supported to gain experience and skills of caring for a variety of patients with a diverse range of clinical needs. The education team and Clinical Nurse Specialists work hard to share their knowledge and skills in a supportive environment.

Open 24 hours a day
7 days a week
Level 3 Variety Club Building





Butterfly Ward

Haematology/Oncology/Bone Marrow Transplant

Butterfly Ward is a 22 bedded ward including 4 day case beds and 4 Bone Marrow Transplant (BMT) isolation rooms.



While the patient mix is predominantly haematology/ oncology/immunology, gene therapy and BMT, patients from all specialties can be treated here.

Butterfly Ward is managed by our highly qualified nursing team, as well as consultants, doctors, clinical nurse specialists, physiotherapists, healthcare assistants, speech therapists, dietitians, play specialists, psychologists and hospitality assistants. Butterfly Ward has three dedicated Arabic Interpreters situated on the ward.

Open 24 hours a day
7 days a week
Level 4 Octav Botnar Wing





Caterpillar Ward

Outpatients

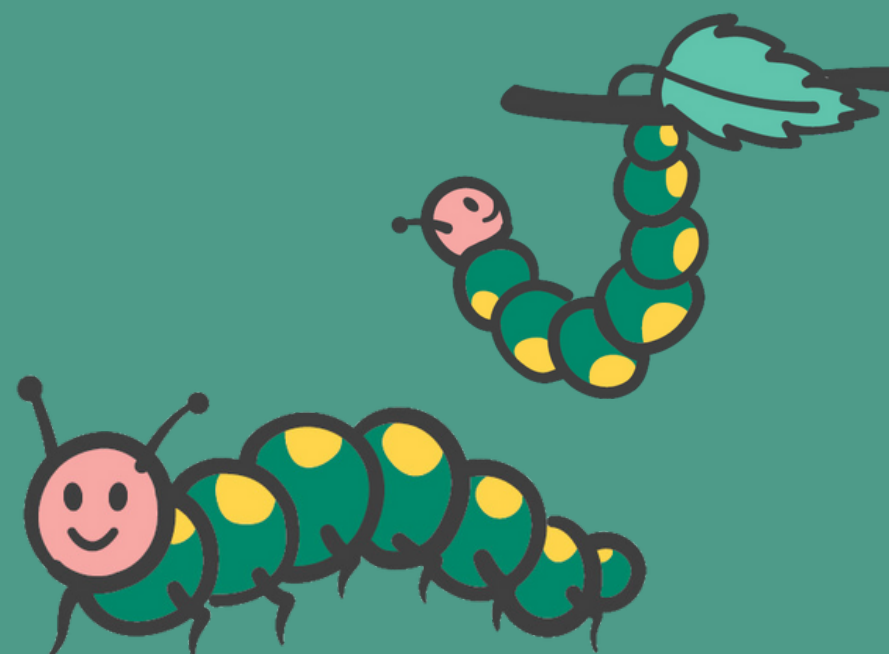
Haematology/Oncology

Caterpillar is an outpatient department treating children with a wide range of conditions. It has 10 consulting rooms, plus 1 isolation room for infectious patients and a treatment room. It also offers a range of speciality clinics as well as specialist nurse clinics.

Children come here from all over the world for expert medical treatment and care. Regular clinics are led by consultants from a wide range of different clinical specialities including; haematology and oncology, gastroenterology, endocrinology, respiratory, neurology, surgery and dermatology.

In addition, nurse led clinics and lists are undertaken which support the shared care model for haematology/oncology outpatients based in London. Caterpillar outpatients has two dedicated Arabic Interpreters.

Open 6 days a week
Mon-Fri: 08:00 to 20:00
Sat: 09:00 to 13:00
Level 2 Octav Botnar Wing





Join Our Team

We value the diversity within our team and the wide range of experience and skills this brings, allowing us to provide the most expert treatment to the children we care for.

We welcome paediatric nurses from all clinical backgrounds and from around the world! Our friendly and dedicated Practice Development Team will ensure you get the training and support you need.

Find more information on joining our team [here](#) or contact us on IPP.Recruitment@gosh.nhs.uk



GOSH holds the **NHS Pastoral Care Quality Award - International Nurses & Midwives**. This recognises our ongoing commitment to providing best practice pastoral support to internationally educated nurses.

We have and will continue to ensure our internationally trained colleagues receive enhanced and tailored pastoral care in their NHS journey and onwards in their nursing career.

Follow us on socials...



**GOSH
Nursing Workforce**

